

CONNECTIONS

Winter 2017

Difference Maker

Kevin Lambright named 2017 Heart of Gold recipient

The LaGrange County Community Foundation Board of Directors named Kevin Lambright of Shipshewana the recipient of the 2017 Heart of Gold award, an honor bestowed to a LaGrange County individual who exemplifies a commitment to service.

LCCF board members Jan Olinger and Sue Keenan announced the recipient in a breakfast ceremony Oct. 28 honoring the 2017 nominees.

Nominated by Parkview LaGrange President Jordi Disler and Foundation Director Sheri Johnston, Lam-

bright received the honor because of his significant contribution to the health and well-being of LaGrange County, support of youth and generosity toward others.

He has served an active role in advancing the mission of Parkview LaGrange, serving on the hospital's board of directors for seven years.

Lambright was surprised by the honor and said he is "grateful to live and be a part of the LaGrange County community."

Read about our 2017 Heart of Gold nominees inside



“ I stand before you, knowing that I'm not better than anyone of you. ”

Kevin Lambright, after receiving the 2017 Heart of Gold award





Agape Missions of LaGrange County received a \$5,360 grant from the community foundation to complete upgrades at its emergency shelter in LaGrange. From left are board members Deven Hostetler, Brittany Cowley and Steve Sherck.

Bringing back hope

■ People in LaGrange County who are homeless don't have many options.

Unless a church or friend steps in, families and individuals have no place to go. That changed in 2014, when Agape Missions of LaGrange County started to help neighbors in need.

Their mission is to provide temporary housing to people in LaGrange County who find themselves homeless for any number of reasons.

Since 2014, they have helped several families get back on their feet, providing them with housing in several locations within the county.

In July 2016, the organization was able to purchase its first home and begin renovation to create an emergency shelter with three apartments. They received donations, grants

and donated labor to complete a nearly \$30,000 restoration project.

When people stay at Agape Mission's emergency shelter, they also receive help with budgeting, counseling, job hunting and transportation as needed.

In September 2017, LCCF awarded Agape Missions a \$5,360 Community Impact Grant to complete the renovations on the building's roof.

Our Community Impact Grants are made possible by the power of endowment and unrestricted funds, helping organizations like Agape Missions.

Nonprofits seeking funds apply competitively. Our Grants Advisory Committee and Board of Directors evaluate the requests and decide how to best help local needs. ■

Making Dreams Come True

Chloe Long loves animals. The 2017 Lakeland High School graduate dreamed of attending Purdue University to pursue a pre-veterinary medicine track.

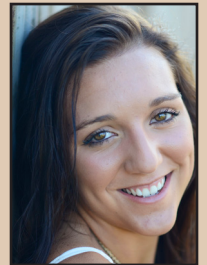
She knew the long road ahead and planned to be in school for at least six years.

"I knew this came with a heavy financial cost," Long said.

Scholarships from the community are now helping Long reach her goals.

A freshman at Purdue University, Long is already on track to apply for vet school.

She joined the Purdue Pre-Veterinary Medicine Club and has settled in the West Lafayette community.



Long received five scholarships through the foundation and was a finalist for the 2017 Lilly Scholarship.

"These scholarships have truly been a blessing from God and my community to pull together and make this happen at such a low cost," Long said. **"The scholarships meant lifting a huge financial burden off my family."**

"I miss my small town, but pursuing my education is so essential and I know it will be worth all the hard work," Long said. "I have a ton of support behind me and I know my community is right there, too," she added.

Long is just one of many LaGrange County students who have been helped by generous donor support.

In 2017, the community foundation awarded \$87,800 in scholarships.

2017 Heart of Gold Nominees

Forces for Good in LaGrange County

Since 2009, we've honored LaGrange County citizens making a difference in our community. This year we received 10 nominations.

Mont Arnold, LaGrange

After teaching for 36 years, Arnold served as the executive director of LaGrange County Habitat for Humanity for 10 years before retiring in 2017.

Tom Miller, Wolcottville

As the owner of Topeka Pharmacy along with his, Morag, Miller has served on numerous community boards and mentored 11 students who have gone on to pursue careers in pharmacy.

Brenda Snyder, LaGrange

Snyder uses Huckleberries cafe as an avenue to support and promote others. Instead of accepting tips, she has a "Pay It Forward" program where customers can contribute to a fund to help people in need.

Richard Yoder, Topeka

Thirteen years ago, Yoder was elected president of the Clothes and Food Basket board of directors. In his role, he lead the effort to fundraising effort to build a new location for the food pantry.



Kevin Lambright, seated, was named the 2017 LCCF Heart of Gold recipient October 28. From left are the 2017 Heart of Gold nominees Katie Bowman, Sharitta Carpenter, Brenda Snyder, Kyle Olinger representing Sons of the American Legion, Richard Yoder, Tom Miller, Russell Baker and Mont Arnold. Not pictured is James Norris.

Russell Baker, LaGrange

Baker has volunteered with Habitat for Humanity, Miller's Merry Manor, LaGrange United Methodist Church and Kairos Prison Ministry.

James Norris, LaGrange

As a LaGrange County Shriner, Norris transports children and their families to the Chicago Shriners Hospital for treatment.

Katie Bowman, Wolcottville

Bowman volunteers as a Court Appointed Special Advocate, coordinates the South Milford Farmers

Market and volunteers with the South Milford Community Improvement League.

Sharrita Carpenter, Wolcottville

As the LaGrange County 4-H Dog Club leader, Carpenter touches the lives of many youths in the county by teaching kids good citizenship.

Sons of the American Legion Squadron 215

The squadron conducts flag education programs in local schools and holds fundraisers annually for local organizations.



Join the We Give Thanks Challenge

We believe in the hope inspired by the holiday season!

During our 2017 We Give Thanks Community Challenge will offer a match for every dollar up to \$5,000 in support of local food pantries.

Our goal is to raise \$10,000 to support local agencies as they feed hungry families in LaGrange County.

The campaign will run from November 20 to December 31.

Donation checks should be made payable to LCCF with "We Give Thanks" on the memo line.

Cash donations for this purpose should be accompanied with donor contact information and written instructions directing the gift to "We Give Thanks."

LaGrange County Community Foundation

109 E. Central Ave., Ste.3, LaGrange, IN 46761
Ph. 260-463-4363 | www.lccf.net

The LaGrange County Community Foundation connects people to charitable causes and provides resources to nonprofits to make a lasting and sustainable impact. It's our mission to inspire and sustain generosity, leadership and service.



Upcoming Events

November 20

We Give Thanks begins

November 20

Scholarships open online

November 23-24

Office closed for Thanksgiving

December 22 & 25

Office closed for Christmas

December 31

We Give Thanks ends

January 31

Scholarship deadline



NONPROFIT ORG
U.S. Postage PAID
LAGRANGE, IN
PERMIT NO. 180

Give yourself the gift of a year-end tax deduction

BY JAMA KEAFFABER, DEVELOPMENT DIRECTOR

Did you know that the LaGrange County Community Foundation can help make your year-end giving have a positive impact within our community? When you give locally through LCCF, you invest in programs and services that impact LaGrange County.

Here is how you can be intentional in giving....

Designate your tax deductible gift for an **unrestricted fund**. This allows your gift to be used for nonprofits in LaGrange County as needs arise. The Community Foundation's staff, Grants Advisory Committee and Board of Directors identify the needs in our community and guide the use of our unrestricted funds to fill those voids.

In 2016, the foundation awarded \$370,000 in grants to support health and human service, recreation, environment, education, and arts and culture programs.



Be creative in your giving

There are so many different ways to give through the LaGrange County Community Foundation. It's not always cash!

- **Tangible property** (car, boat, artwork, valuable antiques)
- **Securities** (roll over stock vs. capital gains)
- **Real estate** (acres of land)

- **Oil, gas, mineral interests**
- **Grain** (soybean, oat, wheat, corn, barley, etc.)
- **Life insurance** (Take out a policy to be paid out upon death).

These are just a few examples of how you can get creative in leaving a charitable gift for your community!